

## **Setting up the X-Lite Softphone on a Windows PC**

### **A) Downloading X-Lite**

1. Point your web browser to <http://www.xten.com>
2. Click on Products, then on X-Lite – Free, then on Download X-Lite Now!
3. Select "Save exe program to disk" and then click the OK button to start the download.
4. Click the Save button to save the download to your desktop.
5. Wait until the download is complete, then click the Close button to close the download dialog box. The X-Lite Installer icon will show up on your desktop.

### **B) Installing X-Lite**

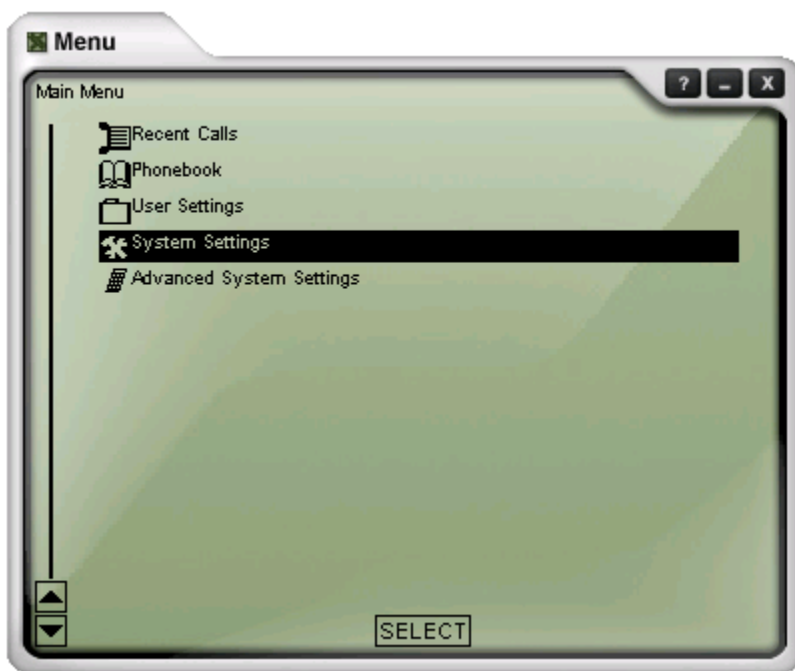
1. Double click on the installer icon on your desktop to start the installation.
2. Click the Yes button to confirm that you want to start the installation.
3. Click the Next button to continue.
4. Read the license agreement and click the Next button to continue.
5. And again, click the Next button to continue.
6. Click the Next button to accept the default location for X-Lite.
7. Click the Next button to accept the default start menu folder.
8. Click the Next button to create a desktop icon for X-Lite.
9. Click the Next button to install.
10. Click the Finish button to finish the installation.

### **C) Configuring the X-Lite Softphone for use with SuperPBX**

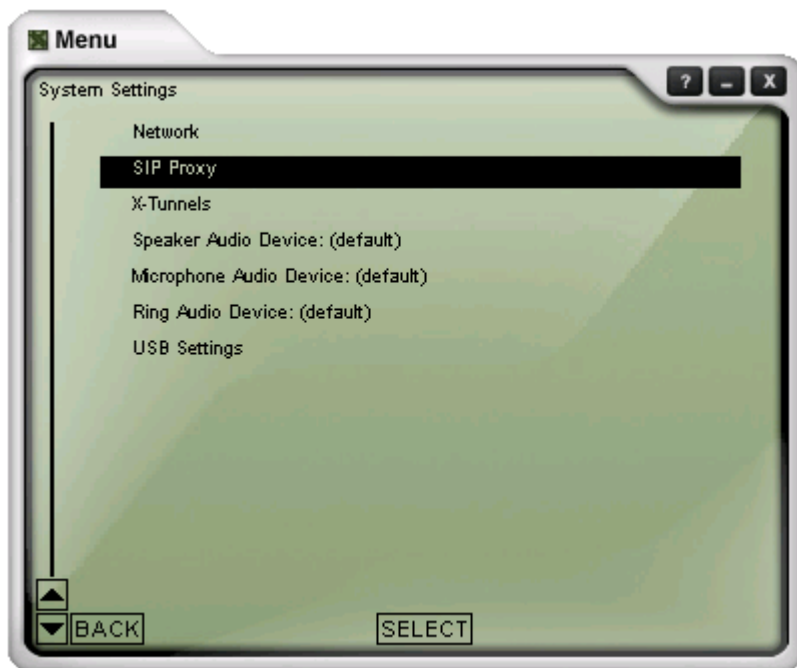
1. Double click on the X-Lite icon on your desktop to launch X-Lite.



2. Click on Setting Menu button (enclosed in RED CIRCLE ), wait for the menu window to finish loading.



3. Double click on "System Settings" to display system settings dialouge box.



4. Double click on "Sip Proxy" to display sip proxy settings dialouge box.



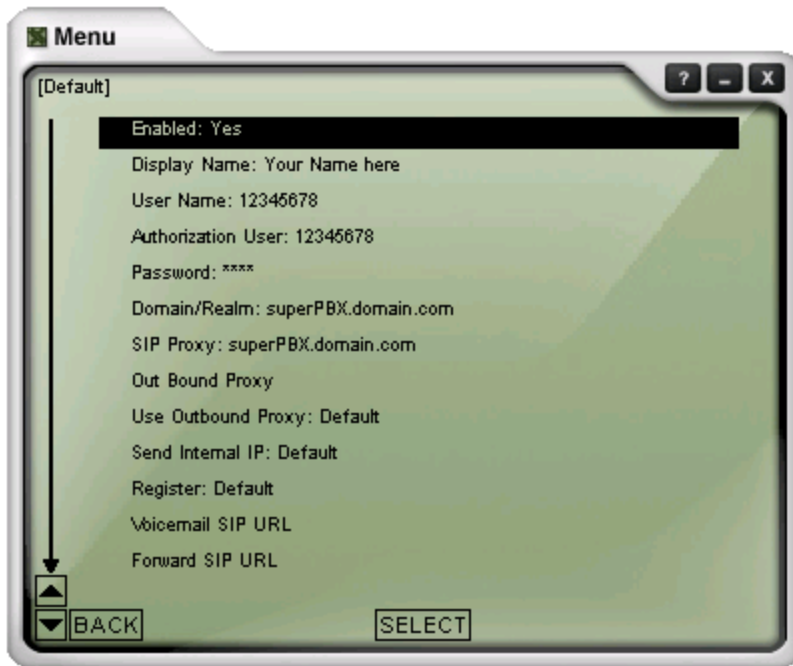
5. Double click on "Default" to display default settings dialouge box.



6. Double click "Enable: No". It will display following dialouge box.



7. Check mark "Yes" and select "Back" button to go back to "Default Setting box".



8 . Now fill in the required fields as follows,

Display Name : Your name

Username : Your username i.e your extension number

Authorization User : Same as username

Password : Your password assigned to you

Domain/Realm : Your SuperPBX domain name or IP address

Sip Proxy : Your SuperPBX domain name or IP address

9. Now click "Back" button until you see "System Setting box" then close it by click X mark on upper right corner.

10. Now your Xlite is configured. You will see "Logged in" displayed on Xlite screen.



All rights reserved. All content is copyright © [Super Technologies Inc.](http://www.superpbx.com)